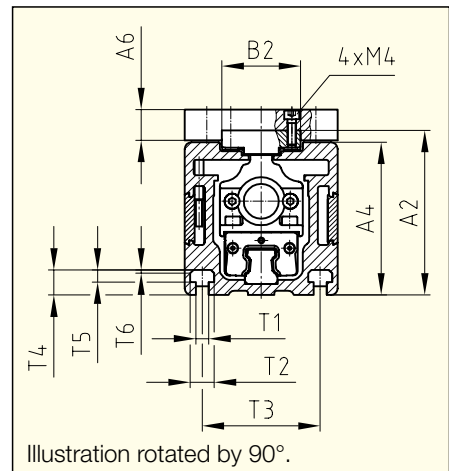


4.1.1 Dimension Table
Type ALM 70-O without Drive

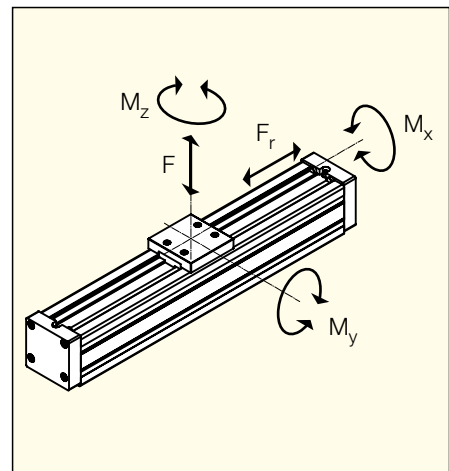


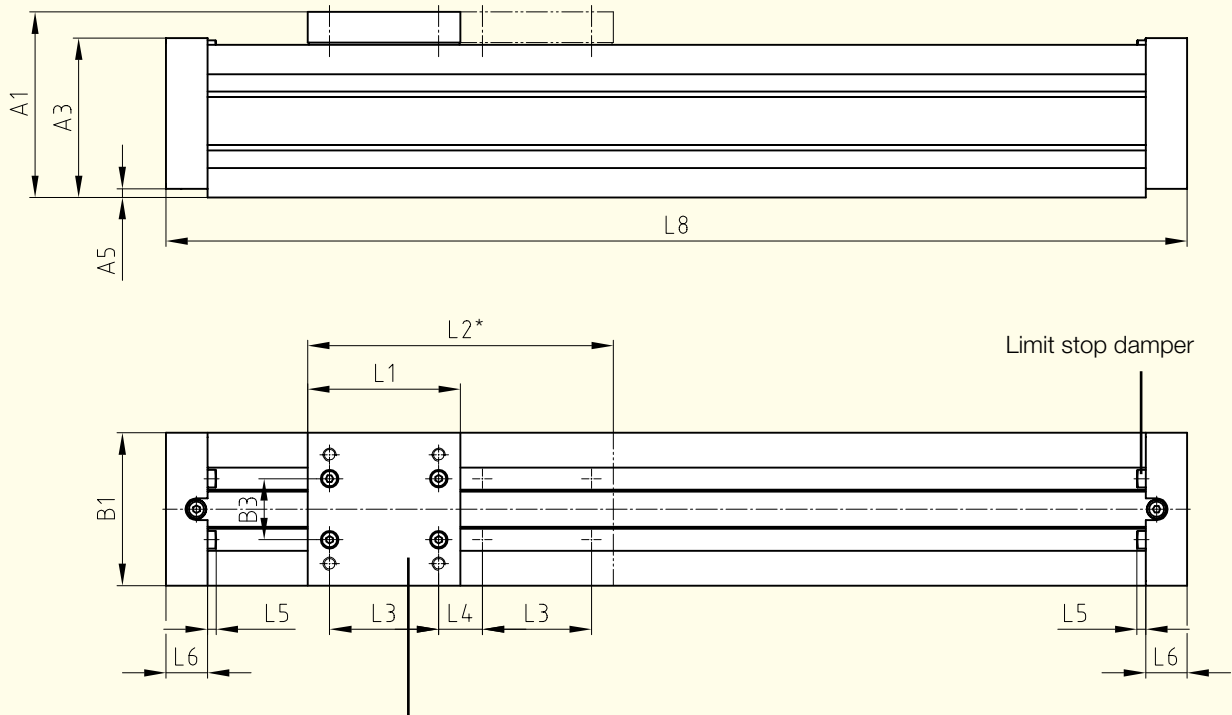
Figure 2: Linear module ALM 70-O-1



Technical Data

		ALM 70-O	
		Single carriage	Double carriage
Maximum admissible central force F	(N)	500	1 000
Dyn. Load bearing value C of the linear guideway	(N)	9 000	18 000
Admissible bending moment in case of full support	M_x (Nm)	20	40
	M_y (Nm)	30	120
	M_z (Nm)	20	68
Break-away force F_r (with 1 carriage)	(N)	6	6
Profile support recommended as from	(mm)	500	500
Maximum stroke	(mm)	2 510	2 440
Installation position		any	any
Maximum travelling speed v_{max}	(m/s)	5	5





Standard table plate AP-70-01-TH:
Bore pattern, also for double table plate AP-70-04-TH,
refer to chapter 4.3 Accessories

* optionally: Double carriage

Standard stroke (mm)	Single carriage	110	160	210	260	310	410	510	610	810	1010	1210	1410
	Double carriage	40	90	140	190	240	340	440	540	740	940	1140	1340
Overall length	L8 (mm)	252	302	352	402	452	552	652	752	962	1152	1352	1552
Weight without table plate (kg)	Single carriage	2.3	2.6	2.9	3.2	3.5	4.1	4.7	5.3	6.5	7.7	8.9	10.1
	Double carriage	2.8	3.1	3.4	3.7	4.0	4.6	5.2	5.8	7.0	8.2	9.4	10.6

Special- and intermediate strokes available on request!

A1	A2	A3	A4	A5	A6	L1	L2	L3	L4	L5	L6
85	75.5	73	70	4	14	70	140	50	20	4	19

B1	B2	B3	T1	T2	T3	T4	T5	T6
70	36	28	6	11	54	11.5	5.5	1.5×45°

All dimensions in mm. Subject to dimensional- and design modifications!

**4.1.2 Dimension Table
Type ALM 70-S with
Spindle Drive**

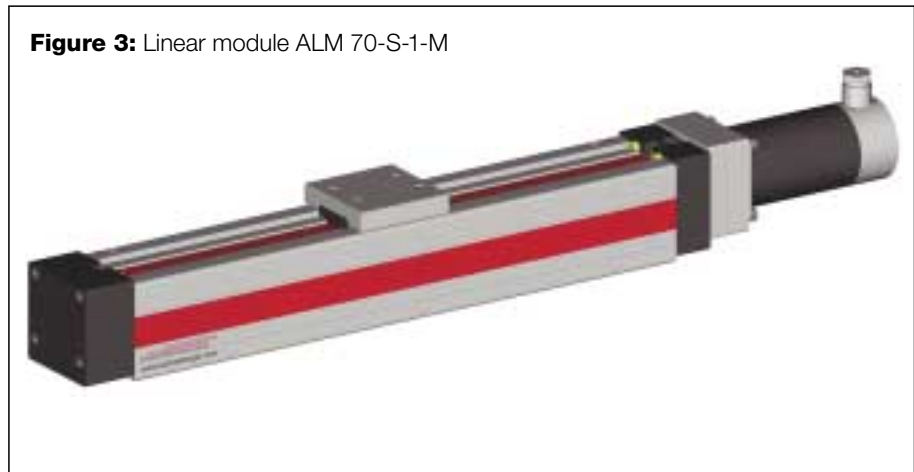
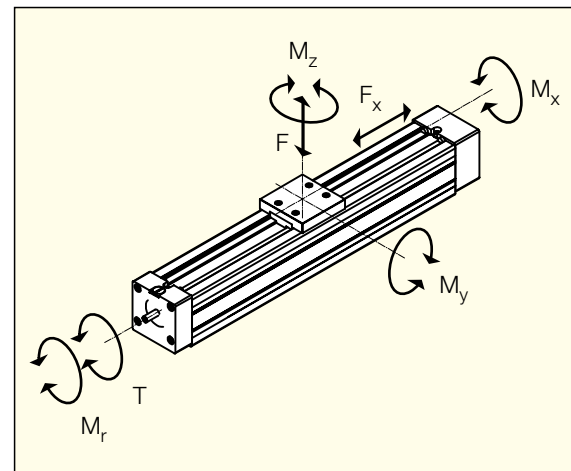
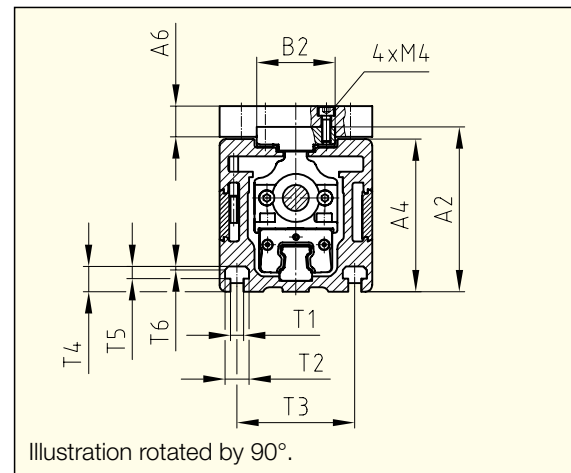


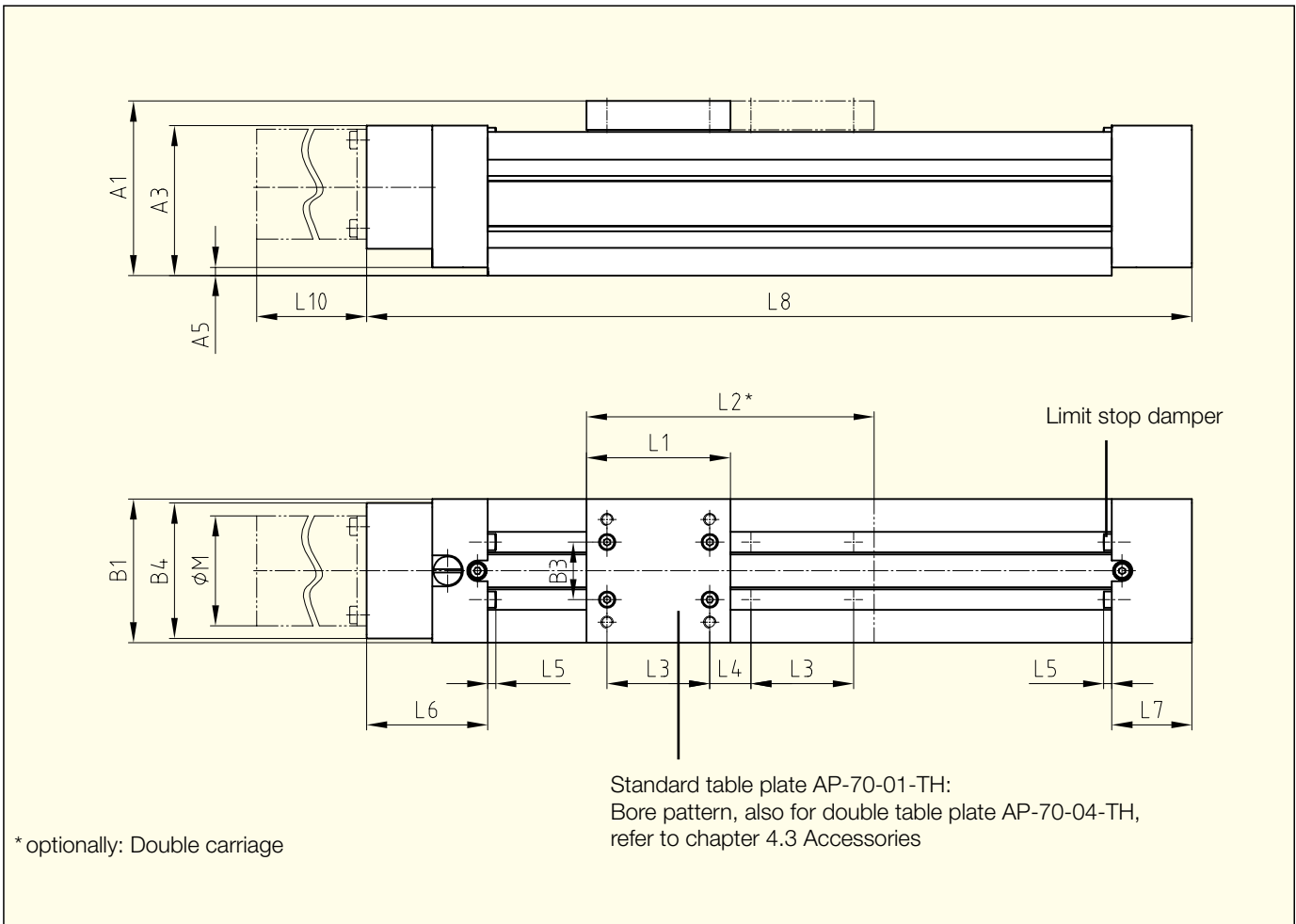
Figure 3: Linear module ALM 70-S-1-M

Technical Data

		ALM 70-S	
		Single carriage	Double carriage
Maximum permissible central force F	(N)	500	1 000
Dyn. Load bearing value C of the linear guideway	(N)	9 000	18 000
Permissible bending moment with full support	M_x	(Nm) 20	40
	M_y	(Nm) 30	120
	M_z	(Nm) 20	68
Max. permissible axial force F_x of the spindle	(N)	500	500
Max. recommended load to be moved at the highest dynamism	(N)	50	50
Static friction moment M_f (with 1 carriage)	(Ncm)	3	3
Profile support recommended as from	(mm)	500	500
Maximum stroke	(mm)	810	740
Installation position		any	any
Positioning accuracy*	(mm/m)	$\pm 0.05/0.3$	$\pm 0.05/0.3$
Repeatability*	(mm)	ca. ± 0.02	ca. ± 0.02
Lead error of the ball screw K12x10: G50 (IT7)	(mm/mm)	0.05/300	0.05/300
Feed per motor revolution without gearing	(mm)	10	10
Maximum travelling speed v_{max}	(m/s)	0.3	0.3
Maximum motor shaft diameter	(mm)	14	14
Maximum drive torque T	(Nm)	4	4

* Dependent on the type of motor





Standard stroke (mm)	Single carriage	110	160	210	260	310	410	510	610	810
	Double carriage	40	90	140	190	240	340	440	540	740
Overall length	L8 (mm)	312	362	412	462	512	612	712	812	1012
Weight without table plate and motor (kg)	Single carriage	3.0	3.3	3.6	3.9	4.3	4.9	5.5	6.2	7.5
	Double carriage	3.5	3.8	4.1	4.4	4.8	5.4	6.0	6.7	8.0

Special- and intermediate strokes available on request!

A1	A2	A3	A4	A5	A6	L1	L2	L3	L4	L5	L6	L7	L10
85	75.5	73	70	4	14	70	140	50	20	4	59	39	*

∅M	B1	B2	B3	B4	T1	T2	T3	T4	T5	T6
*	70	36	28	66	6	11	54	11.5	5.5	1.5×45°

* Dependent on the type of motor
All dimensions in mm. Subject to dimensional- and design modifications!

**4.1.3 Dimension Table Type
ALM 70-B with Belt Drive**

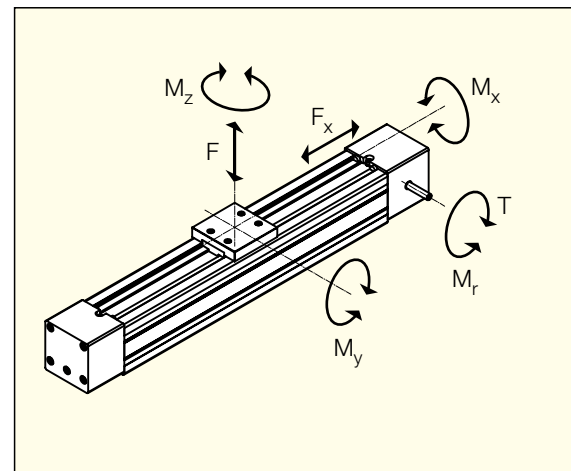
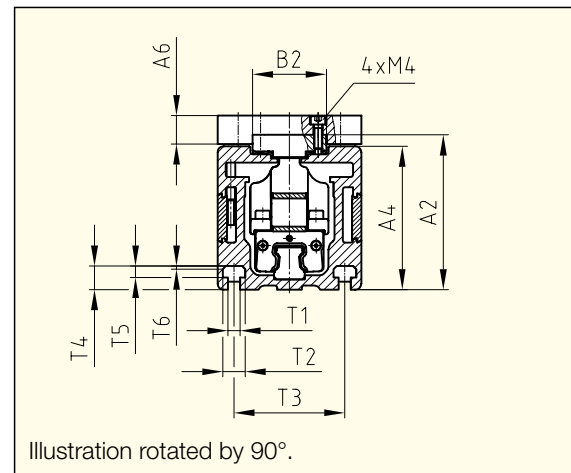
Figure 4: Linear module ALM 70-B-1-M-R

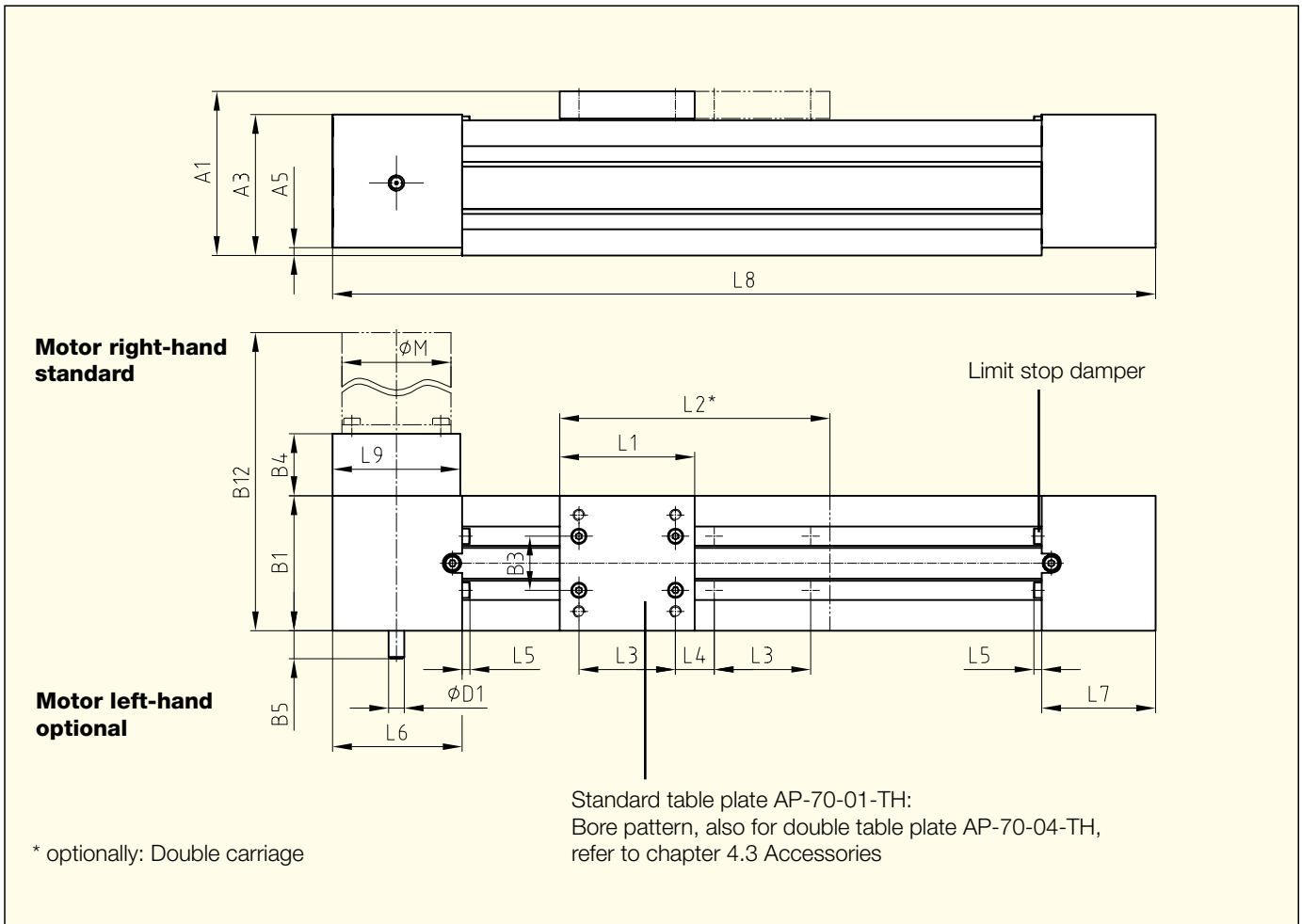


Technical Data

		ALM 70-B	
		Single carriage	Double carriage
Maximum permissible central force F	(N)	500	1 000
Dyn. Load bearing value C of the linear guideway	(N)	9 000	18 000
Permissible bending moment with full support	M_x	(Nm) 20	40
	M_y	(Nm) 30	120
	M_z	(Nm) 20	68
Max. permissible tensile force F_x of the belt	(N)	500	500
Max. recommended load to be moved at high dynamism	(N)	50	50
Static friction moment M_r (with 1 carriage)	(Ncm)	6.6	6.6
Profile support recommended as from	(mm)	500	500
Maximum stroke	(mm)	2 510	2 440
Installation position		any	any
Positioning accuracy*	(mm/m)	$\pm 0.15/0.3$	$\pm 0.15/0.3$
Repeatability*	(mm)	ca. ± 0.03	ca. ± 0.03
Feed per motor revolution without gearing	(mm)	50	50
Maximum travelling speed v_{max}	(m/s)	1.5	1.5
Maximum motor shaft diameter	(mm)	14	14
Maximum drive torque T	(Nm)	3	3

* Dependent on the type of motor





Standard stroke (mm)	Single carriage	110	160	210	260	310	410	510	610	810	1010	1210	1410
	Double carriage	40	90	140	190	240	340	440	540	740	940	1140	1340
Overall length	L8 (mm)	340	390	440	490	540	640	740	840	1040	1240	1440	1640
Weight without table plate and motor (kg)	Single carriage	3.5	3.8	4.1	4.4	4.7	5.3	5.9	6.5	7.7	8.9	10.2	11.4
	Double carriage	4.0	4.3	4.6	4.9	5.2	5.8	6.4	7.0	8.2	9.4	10.7	11.9

Special- and intermediate strokes available on request!

A1	A2	A3	A4	A5	A6	L1	L2	L3	L4	L5	L6	L7	L9
85	75.5	73	70	4	14	70	140	50	20	4	67	59	66

ØM	B1	B2	B3	B4	B5	B12	D1	T1	T2	T3	T4	T5	T6
*	70	36	28	32	15	*	8 h 7	6	11	54	11.5	5.5	1.5×45°

* Dependent on the type of motor
All dimensions in mm. Subject to dimensional- and design modifications!