

4.3 Accessories – to be ordered separately

2nd carriage (double carriage) DW

For achieving a much higher torque, load bearing capacity and for doubling the load bearing capacity, a second carriage can be added.

ALM 70:

- As standard version, the table plate AP-70-04-TH is mounted. Bore pattern, see page 28, figure 12.
- The available stroke is reduced by 70 mm.

ALM 80:

- The carriage is elongated correspondingly. Bore pattern refer to chapter 4.2.1
- The available stroke is reduced by 88 mm.

Adapter plate AP

For the universal fixing of the modules, various adapter plates are available. The scope of supply also includes corresponding screws, resp., sliding blocks. Illustrations, see page 28, figures 7ff.

Reference and limit switch PNP

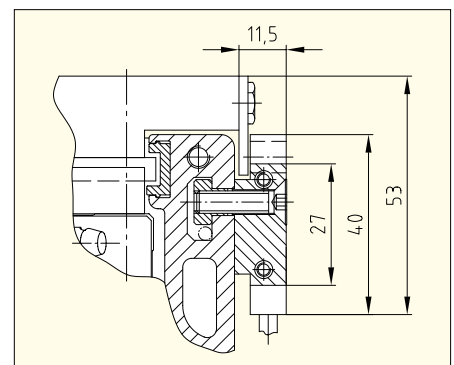
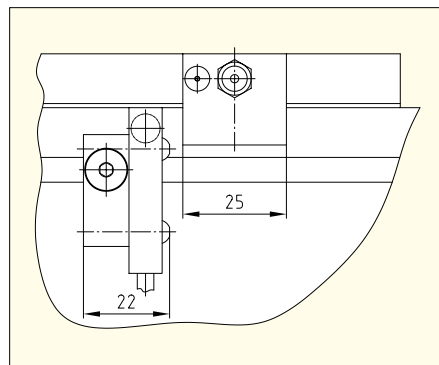
The inductive switches are available both as PNP normally closed and PNP normally open versions (10 ... 30 V). The free cable length is approx. 2m.

ALM 70:

- Integrated into the module
- Two positions selectable per side

ALM 80:

- Affixed to the outside; put into action by lever mounted on the carriage
- Adjustable in the fixing slot of the aluminum profile



Lubrication connection SS

Only available as an option for ALM 70; Standard for ALM 80

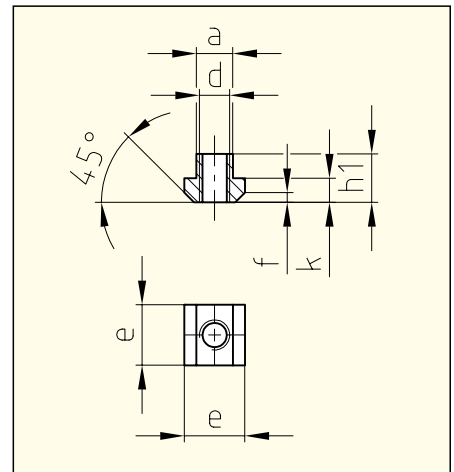
Connection of 2 linear modules each AV

SCHNEEBERGER takes over the installation and alignment of 2 connected linear modules; corresponding adapter plates have to be ordered separately.

Sliding block NS

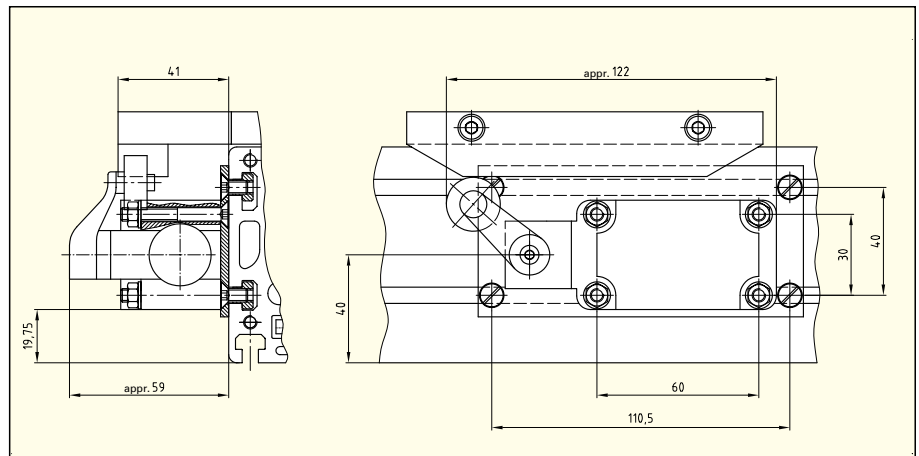
The sliding blocks correspond to DIN 508 M5x6 and are corrosion-resistant.

a	d	e	f	h1	k
6	M5	10	1.6	8	4



Limit switch special mounting outside LS

On request, special limit switches can be attached to the outside of the aluminum profile.
ALM 70: Inductive switch
ALM 80: Mechanical switch



Fixed stop per side ML

In order to avoid damage following collisions, e. g. within a portal superstructure, mechanical limit stops made of aluminum are available.

Coupling CP

Corresponding to the selected motor, a suitable coupling has to be chosen.

Motor flange MF

The motor flange serves to adapt the motor to the coupling housing.

Motor mounting in case of ball screw drive on the right-hand side MS

By means of the parallel attachment of the motor in case of the ALM 70 with ball screw drive, a reduction of the installation space can be achieved. On request!

Centre drive (in case of ball screw drive) MD

On request!

Universal jointed shaft (in case of belt drive) CW

On request!

Adapter plates for ALM 70

Further bores, e.g., for the adaptation of other components, can easily be made in the material by the customer himself.

Figure 7: Adapter plate AP-70-01

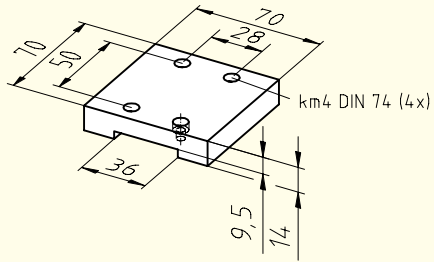


Figure 8: Adapter plate AP-70-01-TH

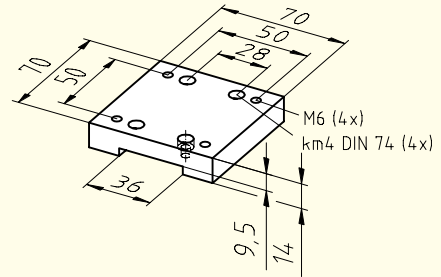


Figure 9: Adapter plate AP-70-02

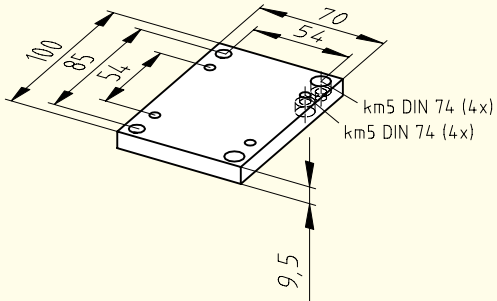


Figure 10: Adapter plate AP-70-03

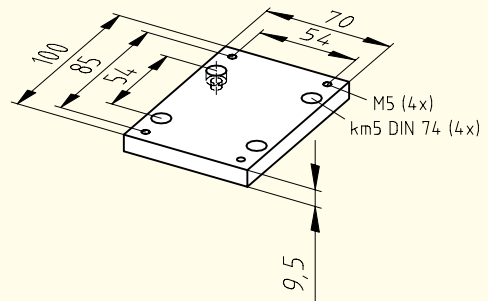


Figure 11: Adapter plate AP-70-04

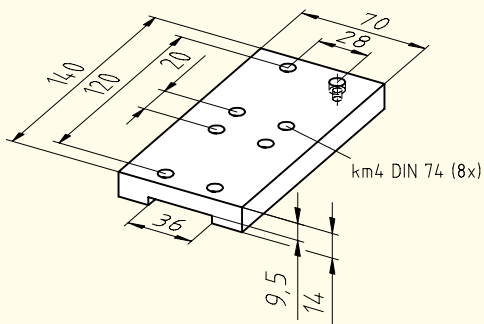


Figure 12: Adapter plate AP-70-04-TH

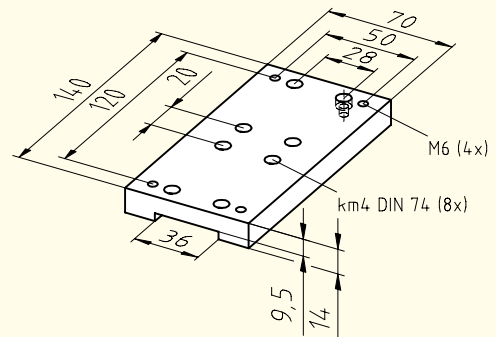


Figure 13: Adapter plate AP-70-05

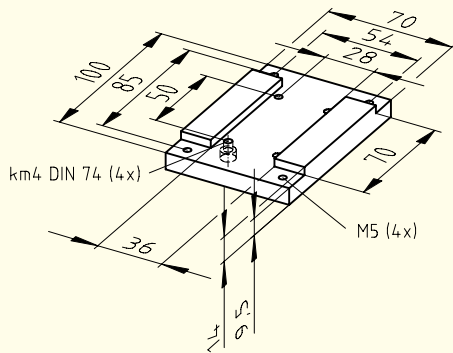


Figure 14: Adapter plate AP-70-06

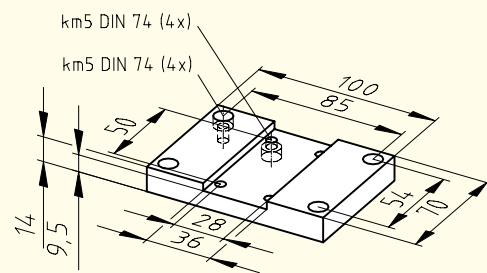


Figure 15: Adapter plate AP-70-07

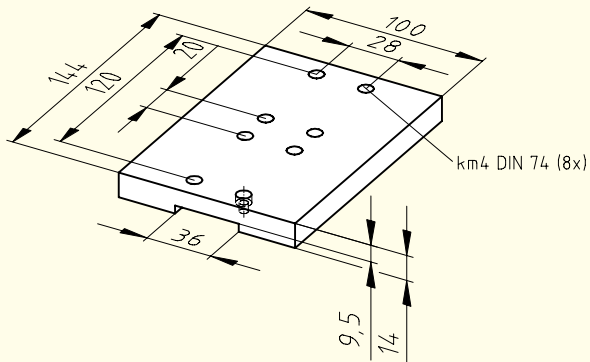


Figure 16: Adapter plate AP-70-08

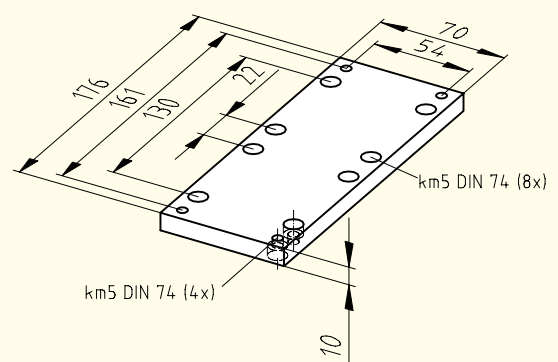


Figure 17: Adapter plate AP-70-09

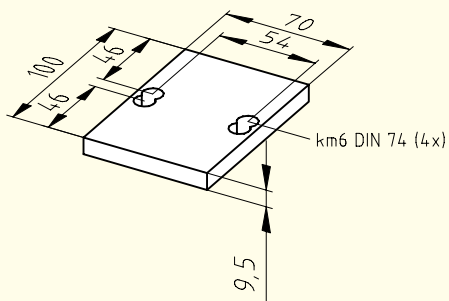


Figure 18: Adapter plate AP-70-10

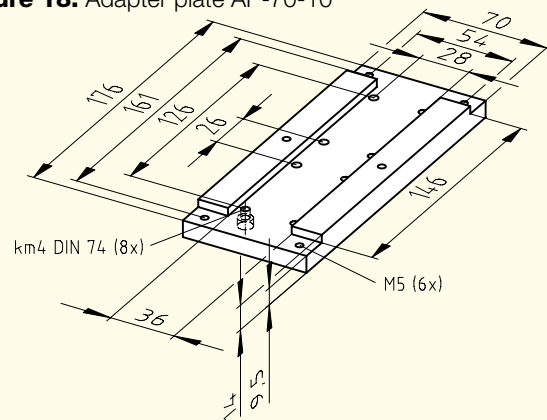


Figure 19: Adapter plate AP-70-11

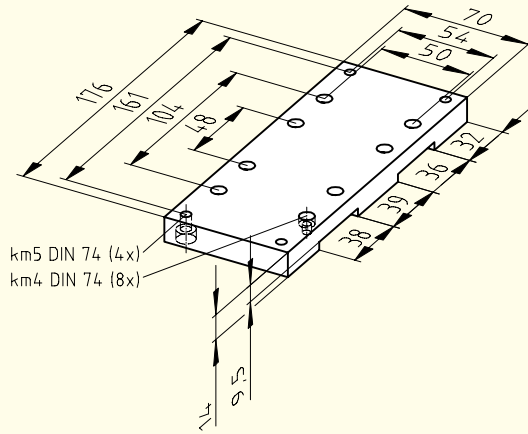


Figure 20: Adapter plate AP-70-12

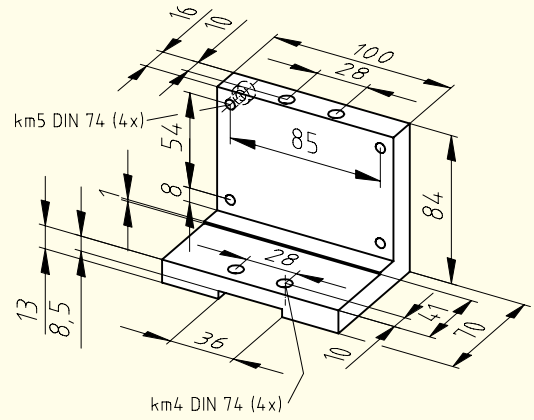


Figure 21:
Adapter plate AP-70-13

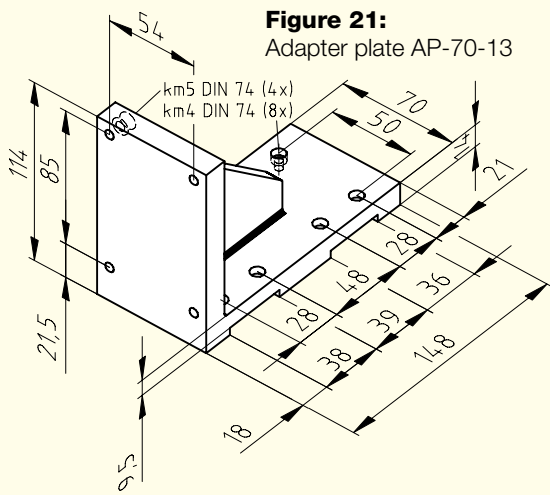
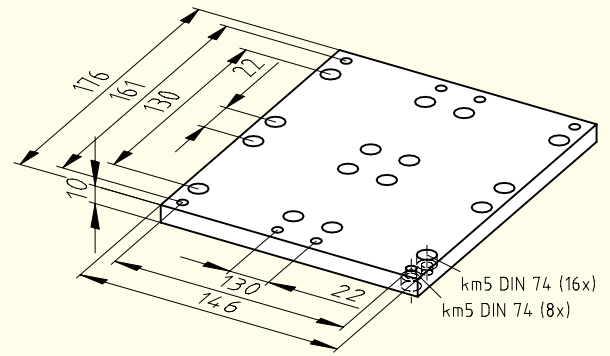


Figure 22: Adapter plate AP-70-14



Adapter plates for ALM 80

Additional adapter plates will be designed specially according to the application.